



Labeled, packaged, and distributed in the U.S.A.
www.carpenterbee traps.com
EPA Est. # 90178-NC-001 • Pat. USA676661182,
OTHER PATENTS PENDING

- 1) Carpenter bee flies into the hole on the side of the trap
- 2) Once inside they fly to the light coming in from the bottom
- 3) Once in the trap they cannot get out

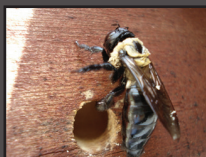
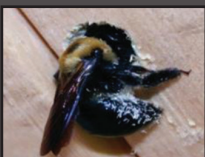
How?

- EXTREMELY easy to install
- No chemicals or skill needed
- Set on or mount to any wooden structure
- Set it and forget it
- Will not attract other insects



Why Carpenter bee traps?

WHAT YOU SEE ON THE OUTSIDE



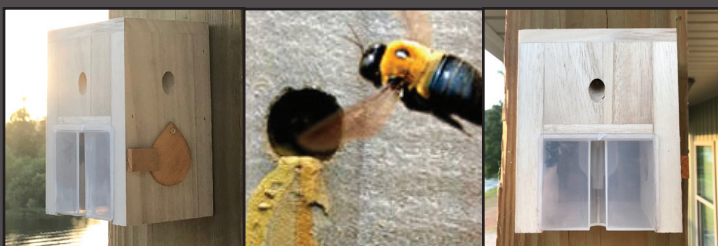
WHAT YOU DON'T SEE ON THE INSIDE



Bees 'N Things

New and Improved!

CARPENTER BEE TRAP



Bees go in but can't get out!

Easier to Mount!

Escape proof design!

Free bee dam included!

SEE INSTRUCTIONS INSIDE

WARNING:

- **DO NOT** touch live carpenter bees
- **DO NOT** hang in trees or bushes
- The trap **SHOULD NOT** sway in the wind
- **DO NOT** paint or stain the trap
- **DO NOT** use any chemicals in or around the trap

If the trap has **not caught** any bees **within two weeks** move the trap to a new location.

FREE-Bee Dam Inside

Included inside the trap you should find a **free bee dam**. This is to **plug existing holes** that the bees have already made. To truly remove your carpenter bee infestation you **need to repair** the holes the bees have already made. You can do this any time, but the **sooner the better!** The more holes that are fixed the more **effective the traps will be!** Get **more bee dams** at www.carpenterbeetraps.com



For how-to videos visit
www.carpenterbeetraps.com



Customer Satisfaction

When I started this business, its primary purpose was to get me through college. I never thought in a million years it would grow to this level. That being said, I take it personally when a customer is not happy with my products and will do anything in my power to make them happy. Before returning the product, please email me directly at beesnthings@gmail.com. The email comes straight to my phone and I will assist you as quickly as possible!

For how-to videos visit
www.carpenterbeetraps.com

For Best Results

- Trap should be **in place** early spring or before spring
- Temps **above 90** will make traps less effective
- Trap must be in an area with the **highest** concentration of existing holes
- Trap must be on the **same level** as the existing holes
- If **too far** above or below the existing holes the trap will be less effective
- **LOCATION** is the most important factor.
- **Always make sure the trap's door is closed!**

Install Instructions

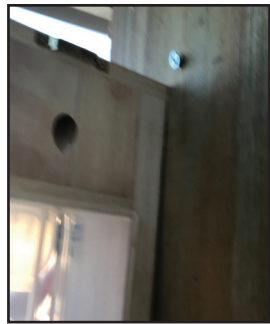
Mounting Instructions – Best Option

1. Find location
2. Insert screw (included) in to desired location
3. Place trap on screw or nail like hanging a picture
4. **Forget it**



Setting Instructions

1. Find location
2. Place trap on a flat surface
3. Secure how you see fit
4. **Forget it**



Emptying Instructions

1. Slide the orange door open
2. Turn trap so that the orange door is facing down
3. Shake the trap until all bees are out of the trap.
4. Once empty **CLOSE** trap door
5. Empty as often as you like.



For how-to videos visit www.carpenterbeetraps.com