

LUMA®
FLYING INSECT TRAP

REFILL GLUE BOARDS + ATTRACTANT

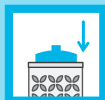
Luma quietly captures common flying pests within the unit—eliminating the annoying buzz and unhygienic mess you get with typical zappers.



Remove release paper from both sides of the glue board.



Evenly distribute fly attractant on both sides of the glue board.



Insert glue board into the Luma through slot on top of unit. Glue board should sit directly over the LED light.

KEEP OUT OF DIRECT SUNLIGHT FOR PROLONGED PERIODS.

Dispose of used glue boards. Replace after 30 days or as needed. For replacement glue boards and attractant, visit our website www.catchmaster.com

CAUTION: KEEP OUT OF REACH OF CHILDREN AND PETS. In case of contact with adhesive, use vegetable or mineral oil to remove from skin. Use paint thinner for easy clean up on floors and other surfaces.

Store at room temperature.

FOR USE WITH
Luma® Flying Insect Trap
(Sold Separately)

LUMA®
FLYING INSECT TRAP

BY CATCHMASTER®

REFILL GLUE BOARDS + ATTRACTANT



NON-TOXIC



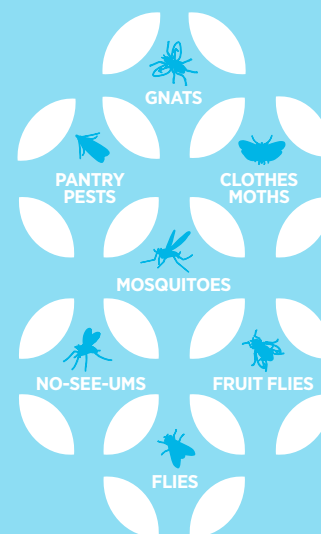
INDOOR &
OUTDOOR USE



DISPOSABLE

TRAPS:

Add attractant to catch the following flying pests



LUMA AND CATCHMASTER ARE
TRADEMARKS OF AP&G CO., INC. OF U.S.A.
AP&G Co., Inc. 72 E 2nd Street,
Bayonne, NJ 07002, USA
EPA EST. NO. 91557-NJ-001
www.catchmaster.com • info@catchmaster.com



Includes • 2 Glue Boards • 2 Fly Attractant Pouches