

CATCHMASTER

GOLD STICK™ FLY TRAP

The Catchmaster® Gold Stick™ is a product of years of research into fly behavior and attraction.

The Catchmaster® Gold Stick™ is safe to use around children and pets.

Place traps on window sills or hang vertically. Use in offices, homes, garages, stables, barns or near garbage containers.

CAUTION
KEEP OUT OF REACH OF CHILDREN AND PETS. In case of contact with adhesive, use vegetable or mineral oil to remove from skin. Use paint thinner for easy clean up on floors and other surfaces.



Since 1977, all Catchmaster® products have been designed in Brooklyn, NY.
Depuis 1977, tous les produits Catchmaster® ont été conçus à Brooklyn, NY.



FOR TIPS, VIDEOS, & MORE!
POUR DES CONSEILS, VIDEOS, ET PLUS !

CATCHMASTER AND GOLD STICK ARE TRADEMARKS OF :
CATCHMASTER ET GOLD STICK SONT DES MARQUES DÉPOSÉES DE :

apg AP&G Co., Inc.
75 East 2nd Street
Bayonne, NJ 07002 USA

MADE IN USA - FABRIQUÉ AUX ÉTATS-UNIS
©2013 • EPA EST. NO. 91557-NJ-1
www.catchmaster.com • info@catchmaster.com

#912R



GOLD STICK™ FLY TRAP

PIÈGE À MOUCHES TRAMPA PARA MOSCAS

FLY BAIT INCLUDED

NON TOXIC Home & Family SAFE
NO MESS — NO — ZAPPING
HIDES Trapped FLIES



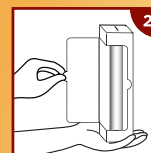
Les appâts pour mouches
Non Toxique - Sécuritaire pour la maison et la famille
Aucun désordre - Aucun bruit d'électrocution
Masque les mouches piégées

Cebo para moscas incluido
No Es Tóxico - Seguridad para el hogar y para la familia
Sin ensuciar - Sin electricidad
Oculta las moscas atrapadas

GOLD STICK™ FLY TRAP

Directions for Use

1. Pull out tab on right side. Carefully loosen perforations from tab to top, and then to bottom.
2. Hold top of box securely. Pull loosened right side towards left side around 3 panels, then loosen from top to bottom on left side.
3. Optional Fly Bait Application - Sprinkle fly bait onto gold surface of the trap.



Carefully remove Catchmaster® Gold Stick™ from box. Remove bottom plastic cap to prevent water from pooling. Sprinkle fly bait onto gold surface of the trap.



Placement Suggestions



Decorative trap - Hides flies out of view



Great for waste management areas

Mode d'emploi

Pour des instructions en français, veuillez tirer la languette sur le côté droit. (Tels qu'illustrés ci-haut)

Instrucciones

Para ver las instrucciones en español, tire de la lengüeta del lado derecho. (Según se ilustró arriba)

PUSH HERE TO REMOVE PANEL

POUSSEZ ICI POUR ENLEVER LE PANNEAU
PULSE AQUÍ PARA QUITAR EL PANEL

CATCHMASTER

www.catchmaster.com



www.catchmaster.com